

Powerful disinfection made easier.



Get ready for an easier way to help protect your patients, staff and healthcare environment. **Sani-HyPerCide™** disinfectant is a powerful, ready-to-use hydrogen peroxide formula that kills *Clostridioides difficile*¹ and other relevant pathogens, without compromising compatibility.² **Sani-HyPerCide** disinfectant can be used on hard nonporous/soft surfaces³, with minimal residue so there's no need for a secondary cleaning step.

Disinfection without compromise.



Sani-HyPerCide™

+ PDI
BE THE DIFFERENCE



+ **Sani-HyPerCide** disinfectant is an easy and ready to use formulation. Unlike other sporicidal products, where mixing or dilution is required, it is available in a ready to use Spray or Wipe format.

+ **Sani-HyPerCide** Spray can be used for Soft Surface Sanitization.

+ **Sani-HyPerCide** disinfectant provides a powerful solution to address the most relevant pathogens.



Effective against relevant microorganisms including *C. auris*, TB and Norovirus in 1 minute.



Effective against *C. diff.*¹ in 5 minutes.



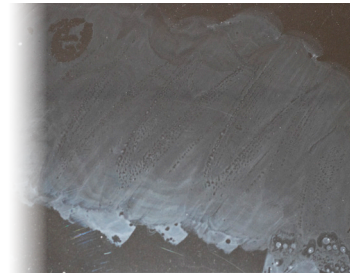
Apple cider vinegar like scent, more acceptable than bleach.



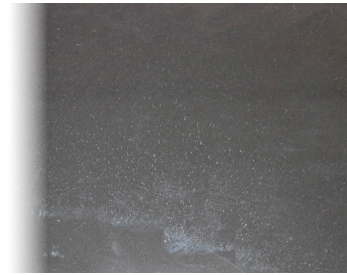
Compatible² with surfaces and materials commonly found in the health care setting. **Sani-HyPerCide** disinfectant's Hydrogen Peroxide formula offers improved compatibility⁴, allowing your teams to focus more on disinfecting and less on the disinfectant.



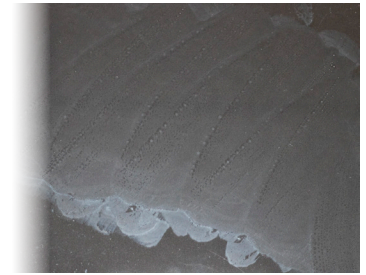
Sani-HyPerCide (Clear Polycarbonate)



Clorox® Bleach (Clear Polycarbonate)



Sani-HyPerCide (Glass)



Clorox® Bleach (Glass)

Sani-HyPerCide disinfectant also shows improved aesthetics over **Clorox®** Bleach, leaving behind less residue so there's no need for a secondary cleaning step.

	REORDER NO.	WIPE SIZE	WIPE COUNT	CASE PACK	TI/HI	CASE WEIGHT	CASE CUBE
Sani-HyPerCide™ Germicidal Disposable Wipe							
Large Canister	P27372	6 x 6.75"	160	160/can, 12 cans/case	10/3	26.5 lbs	1.430 ft ³
Extra Large Canister	P26584	7.5 x 15"	65	65/can, 6 cans/case	10/4	15.1 lbs	0.936 ft ³
Sani-HyPerCide™ Germicidal Spray							
Spray Bottle	X13109	n/a	n/a	32 oz/bottle	13/3	22.30 lbs	1.054 ft ³

Protect your patients, staff and healthcare environment today: pdihc.com/Sani-HyPerCide

1. *Clostridioides difficile* spores formerly known as *Clostridium difficile* spores.

2. Refer to device manufacturer's instructions for use.

3. Refer to product label.

4. Data on file.

Spray EPA Reg. No.: 9480-14

Wipe EPA Reg. No.: 9480-16