

Powerful disinfection made easier.



Get ready for an easier way to help protect your patients, staff and healthcare environment. **Sani-HyPerCide™** disinfectant is a powerful, ready-to-use hydrogen peroxide formula that kills *Clostridioides difficile*¹ and other relevant pathogens, without compromising compatibility.²



Sani-HyPerCide™

PDI®
BE THE DIFFERENCE

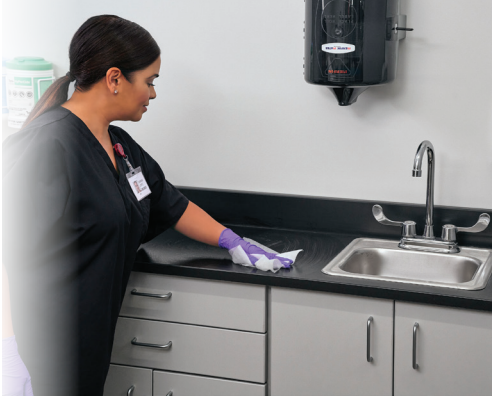


Power and compatibility in an easy to use formula.

Disinfecting with sporicidal formulations can lead to concerns around ease of use, or impact on visual and material compatibility. Some formulations utilize a multi-step process, with mixing or dilution required prior to use. Other formulations require a secondary cleaning step to remove unsightly residue after disinfection. These steps can increase the burden on staff and decrease efficiency.

Disinfection without compromise.





Powerful H₂O₂ Disinfectant

- + **Sani-HyPerCide** disinfectant's hydrogen peroxide formula provides a powerful solution to kill a broad spectrum of the most prevalent healthcare pathogens, including *C. diff.*¹, *C. auris* and Norovirus.
- + Rapid efficacy: 1 minute contact time for all organisms with the ability to address *C. diff.*¹ in 5 minutes.
- + **Sani-HyPerCide** Spray can be used for soft surface sanitization.
- + Apple cider vinegar like scent, more acceptable than bleach.



Simple, Ready to Use

- + **Sani-HyPerCide** disinfectant is simple and convenient to use.
- + Available in ready to use Spray and Wipe formats.
- + No mixing or dilution required for use.

Compatible by Design™

- + Hydrogen peroxide formula won't stain scrubs.
- + Compatible² with surfaces and materials commonly found in the healthcare setting.
- + Bench-top compatibility testing³ on surfaces and materials found that:
 - **Sani-HyPerCide** disinfectant is more compatible than **Clorox**® Bleach.
 - Offers improved aesthetic compatibility than **Clorox** Bleach.



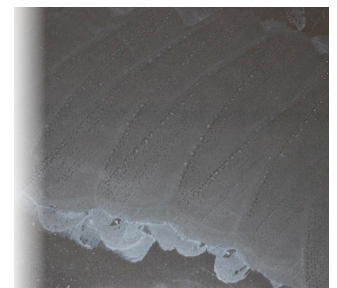
Sani-HyPerCide (Clear Polycarbonate)



Clorox Bleach (Clear Polycarbonate)

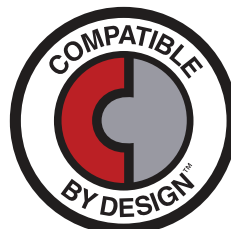


Sani-HyPerCide (Glass)



Clorox Bleach (Glass)

Sani-HyPerCide disinfectant also shows improved aesthetics over **Clorox** Bleach, leaving behind less residue so there's no need for a secondary cleaning step.





	REORDER NO.	WIPE SIZE	WIPE COUNT	CASE PACK	TI/HI	CASE WEIGHT	CASE CUBE
Sani-HyperCide™ Germicidal Disposable Wipe							
Large Canister	P27372	6 x 6.75"	160	160/can, 12 cans/case	10/3	26.5 lbs	1.430 ft ³
Extra Large Canister	P26584	7.5 x 15"	65	65/can, 6 cans/case	10/4	15.1 lbs	0.936 ft ³
Sani-HyperCide™ Germicidal Spray							
Spray Bottle	X13109	n/a	n/a	32 oz/bottle	13/3	22.30 lbs	1.054 ft ³

Protect your patients, staff and healthcare environment today.
 Speak with your PDI sales representative or visit pdihc.com/Sani-HyperCide



Other formulations available.

1. *Clostridioides difficile* spores formerly known as *Clostridium difficile* spores.
2. Refer to device manufacturer's instructions for use.
3. Data on file.

Spray EPA Reg. No.: 9480-14

Wipe EPA Reg. No.: 9480-16

©2021 PDI 400 Chestnut Ridge Road Woodcliff Lake, NJ 07677 T: 800-999-6423 W: pdihc.com

UPDATE 0521 PDI08190815

