

Sani-HyPerCide™ Disinfectant vs. Clorox® Bleach

Visual Residue Assessment



PDI understands how important aesthetics are in today's healthcare patient experience. Providers and patients demand more than just clean surfaces to prevent healthcare associated infections (HAIs). It's not enough to simply clean and disinfect – surfaces must also look clean.

Many surfaces in the healthcare setting are disinfected by bleach, with some formulations leaving behind a streaky surface or residue. This requires a secondary step of cleaning the residue to leave the surface looking clean. The hydrogen peroxide formulation of **Sani-HyPerCide** disinfectant provides the ability to disinfect against the most harmful pathogens, including *Clostridioides difficile* (*C. diff.*),¹ without leaving behind unsightly residue.

To demonstrate the superior cosmetic performance of **Sani-HyPerCide** disinfectant vs. Clorox® Bleach, PDI conducted a study to evaluate residue on sample tiles.²

Visual Residue Assessment

Purpose: Assess difference in residue remaining on surfaces disinfected with Clorox® Bleach compared to surfaces disinfected with **Sani-HyPerCide** disinfectant.

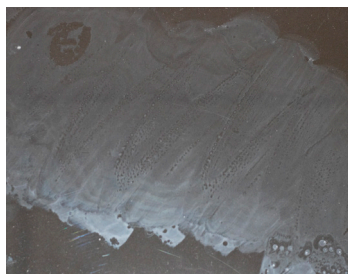
Method: Glass and clear Polycarbonate (PC) plates were tacked down to a flat surface and wiped every hour for a four-hour period.

Results: The plates were removed and placed in a controlled setting for imaging comparison. Photographs were taken at various angles to provide an accurate depiction of any visible residue remaining on the surfaces post disinfection. Surfaces disinfected with Clorox® Bleach showed more visible residue on the surface when compared to **Sani-HyPerCide** disinfectant. This is attributed to evaporation and salt formation due to the presence of sodium hypochlorite in the Clorox® Bleach formulation.

As **Sani-HyPerCide** disinfectant is a hydrogen peroxide formula, it does not undergo the same phenomenon.



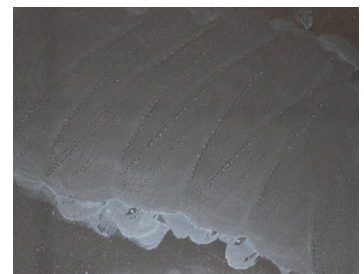
Sani-HyPerCide (Clear Polycarbonate)



Clorox® Bleach (Clear Polycarbonate)



Sani-HyPerCide (Glass)



Clorox® Bleach (Glass)

Sani-HyPerCide disinfectant is a hydrogen peroxide ready to use formula designed to provide powerful protection against HAI causing microorganisms, including *C. diff.*, to help standardize your disinfection protocols without compromising compatibility, or adding unsightly residue.

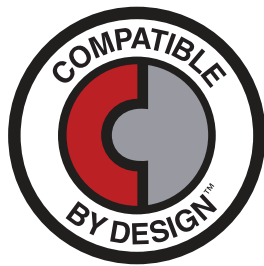


BE THE DIFFERENCE

INTERVENTIONAL CARE PATIENT CARE ENVIRONMENT OF CARE

Power and compatibility in an easy to use formula.

Disinfection without compromise.



REORDER NO. WIPE SIZE WIPE COUNT CASE PACK TI/HI CASE WEIGHT CASE CUBE

Sani-HyPerCide™ Germicidal Disposable Wipe

	REORDER NO.	WIPE SIZE	WIPE COUNT	CASE PACK	TI/HI	CASE WEIGHT	CASE CUBE
Large Canister	P27372	6 x 6.75"	160	160/can, 12 cans/case	10/3	26.5 lbs	1.430 ft ³
Extra Large Canister	P26584	7.5 x 15"	65	65/can, 6 cans/case	10/4	15.1 lbs	0.936 ft ³

Sani-HyPerCide™ Germicidal Spray

Spray Bottle	X13109	n/a	n/a	32 oz/bottle	13/3	22.30 lbs	1.054 ft ³
--------------	--------	-----	-----	--------------	------	-----------	-----------------------

Protect your patients, staff and healthcare environment today.
Speak with your PDI sales representative or visit pdihc.com/Sani-HyPerCide

1 Formerly known as *Clostridium difficile*
 2 PDI Study conducted February 2020
 3 Refer to device manufacturer's instructions for use prior to use
 ©2020 PDI 400 Chestnut Ridge Road Woodcliff Lake, NJ 07677
 T: 800-999-6423 W: pdihc.com UPDATE 0221 PDI03202062

