



SPEED^{*} and POWER

Sani-Prime™

Next-generation Disinfectant

Protect your patients, staff, and facility with the only 1-minute surface disinfectant powered by ACCELOQUAT™ formulation.

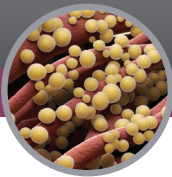
Call on the SPEED and POWER of Prime at pdihc.com/Prime

*As compared to surface disinfectants that require longer than a 1-minute contact time to disinfect.

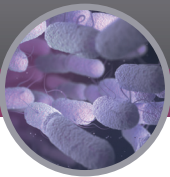


Estimated Annual HAIs: 722,000¹

9 Pathogens Caused 2 of 3 HAIs²



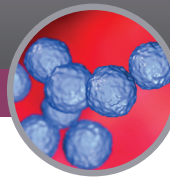
Staphylococcus aureus



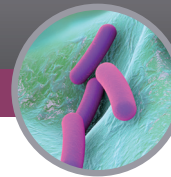
Klebsiella pneumoniae or *K. oxytoca*



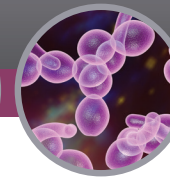
Escherichia coli



Enterococcus species



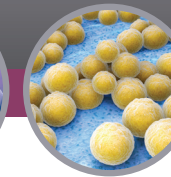
Pseudomonas aeruginosa



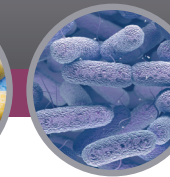
Candida species



Streptococcus species



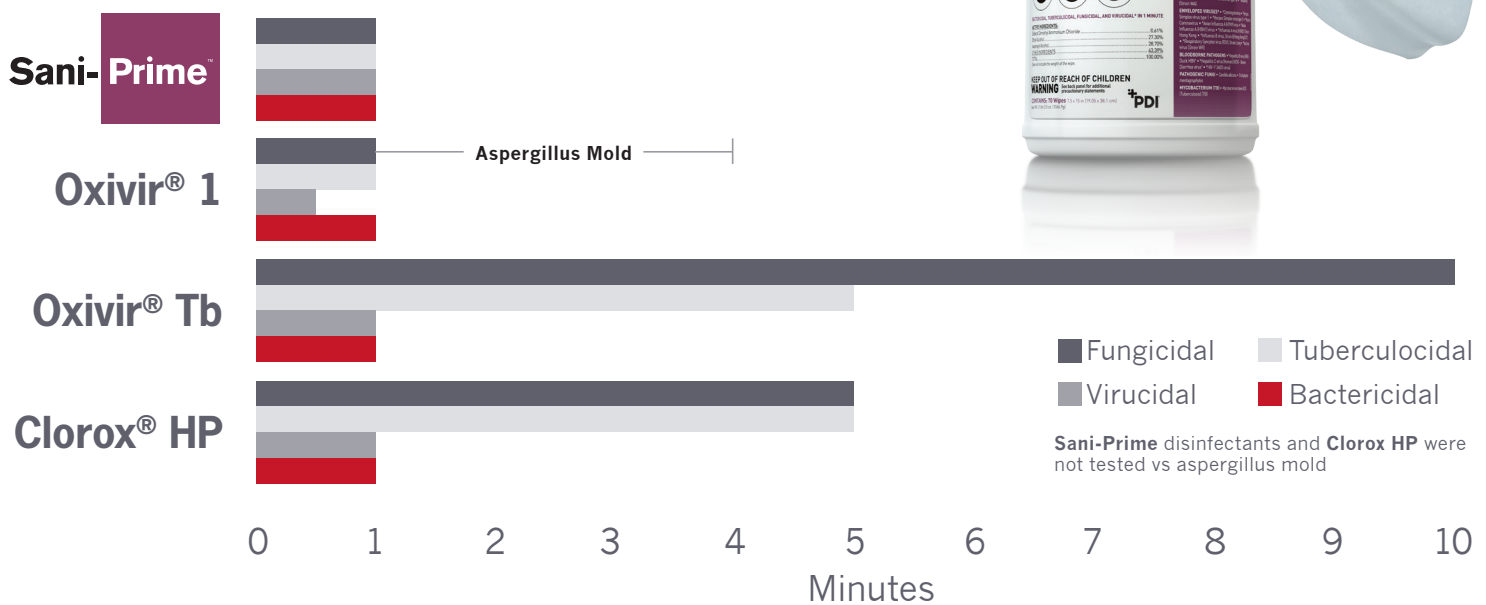
Coagulase-negative *Staphylococcus* species



Enterobacter species

Sani-Prime™ KILLS THEM ALL

True 1-Minute Overall Contact Time



Clorox Healthcare® and Clorox® HP are registered trademarks of The Clorox Company. Oxivir® is a registered trademark of Diversey, Inc.

References: 1. Centers for Disease Control and Prevention. Healthcare-associated infections (HAIs); Data and statistics. <http://www.cdc.gov/HAI/surveillance/index.html>. Updated January 12, 2015. Accessed June 11, 2015. 2. Magill SS, Edwards JR, Bamberg W, et al. Multistate point-prevalence survey of health care-associated infections. *N Engl J Med*. 2014;370:1198-1208.

Call on the SPEED and POWER of Prime at pdihc.com/Prime



INTERVENTIONAL CARE PATIENT CARE ENVIRONMENT OF CARE

Sani-Prime™

PROTECT YOUR PATIENTS, STAFF, AND FACILITY

Call on the SPEED and POWER of Prime
at pdihc.com/Prime

1-Minute Intermediate Level Disinfectant

	REORDER NO.	WIPE SIZE	WIPE COUNT	CASE PACK	TI/HI	CASE WEIGHT	CASE CUBE
Sani-Cloth® Prime Germicidal Disposable Wipe							
Large Canister	P25372	6 x 6.75"	160	160/can, 12 cans/case	10/3	16 lbs	1.410 ft ³
Extra Large Canister	P24284	7.5 x 15"	70	70/can, 6 cans/case	10/4	27.84 lbs	1.010 ft ³
Large Individual Packet	H06182	5 x 8"	50	50/box, 10 boxes/case	20/4	7.99 lbs	0.540 ft ³
Extra Large Individual Packet	U13195	11.5 x 11.75"	50	50/box, 3 boxes/case	24/3	8.65 lbs	0.500 ft ³
Sani-Prime™ Germicidal Spray							
Spray	X12309	n/a	n/a	32 oz/bottle, 9 bottles/case	12/4	19.24 lbs	0.828 ft ³

Other formulations available.



Visit pdihc.com for more info.

©2018 PDI PDJ05189927
Two Nice-Pak Park, Orangeburg, New York 10962
T: 800-444-6725 W: pdihc.com



INTERVENTIONAL CARE PATIENT CARE ENVIRONMENT OF CARE